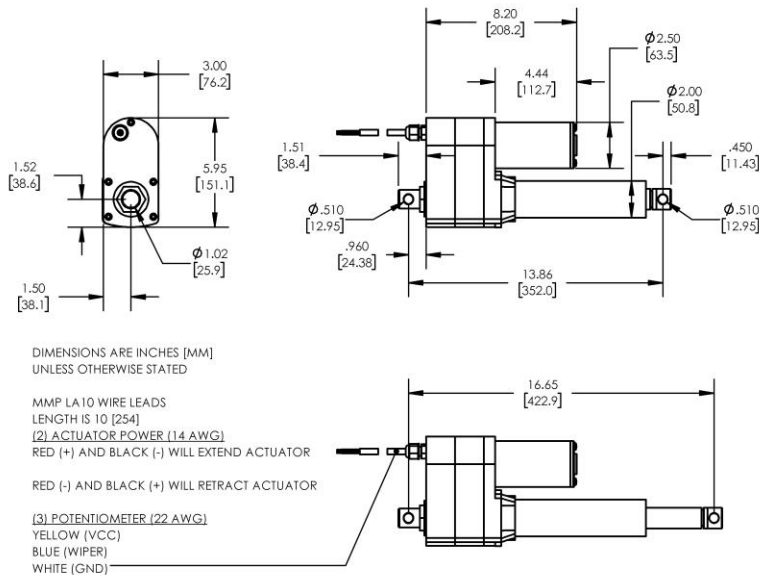




**DC LINEAR ACTUATOR**  
 • IP65 INGRESS PROTECTION  
 • BUILT-IN LIMIT SWITCHES AT EACH END OF TRAVEL  
 • BALL SCREW (ANTI-BACKDRIVING)

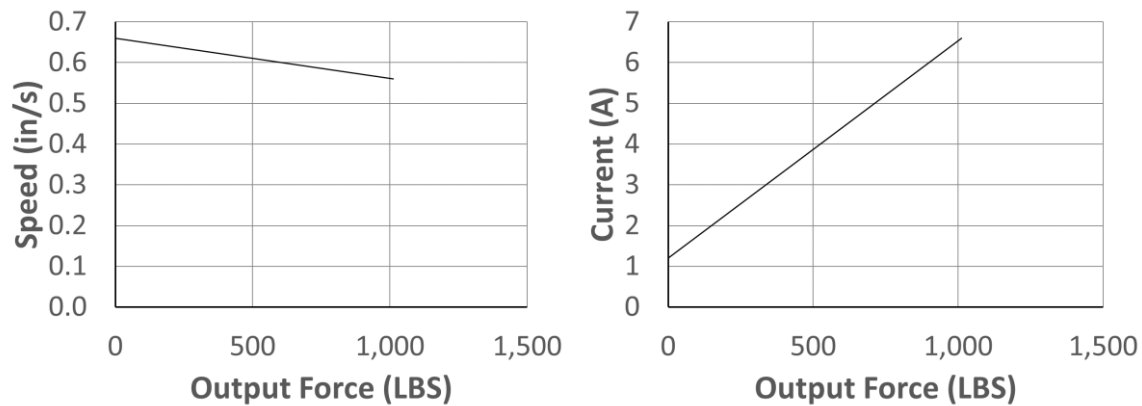
**Model Number:**

**MMP LA10-24V-20-B-100-P**



PERFORMANCE PARAMETERS	VALUE	UNITS	TOLERANCE
Rated DC Voltage	24	VDC	----
Gear Ratio	20:1	----	----
Rated Force Capacity	1012 (4500)	LBS (N)	MAX
Rated Current (at rated force capacity)	6.6	AMPERES	MAX
Rated Stroke Speed (at rated force capacity)	0.56 (14.2)	IN/SEC (MM/SEC)	± 10%
Stroke Speed at No-Load	0.66 (16.8)	IN/SEC (MM/SEC)	± 10%
Static Load Capacity	3057 (13600)	LBS (N)	MAX
Maximum Recommended Duty	25%	----	MAX
Minimum Ambient Operating Temperature Range	-13 (-25)	°F (C)	MIN
Maximum Ambient Operating Temperature Range	149 (65)	°F (C)	MAX
Actuator Resistance Stroke Range (BLU-WHT)	9	kΩ	± 2
Actuator Full Resistance (YLW - WHT)	10	kΩ	± 0.5

#### PERFORMANCE CURVES:



• OPTIONAL MOUNTING BRACKET OPTION AVAILABLE – [FOLLOW THIS LINK FOR DETAILS](#)

**MIDWEST MOTION PRODUCTS, INC**

**DESIGN, MANUFACTURING & DISTRIBUTION - MOTION CONTROL EQUIPMENT**

[www.midwestmotion.com](http://www.midwestmotion.com)

email: [sales@midwestmotion.com](mailto:sales@midwestmotion.com)